

## Engaging with the Community To Alleviate Poverty Since 1961.



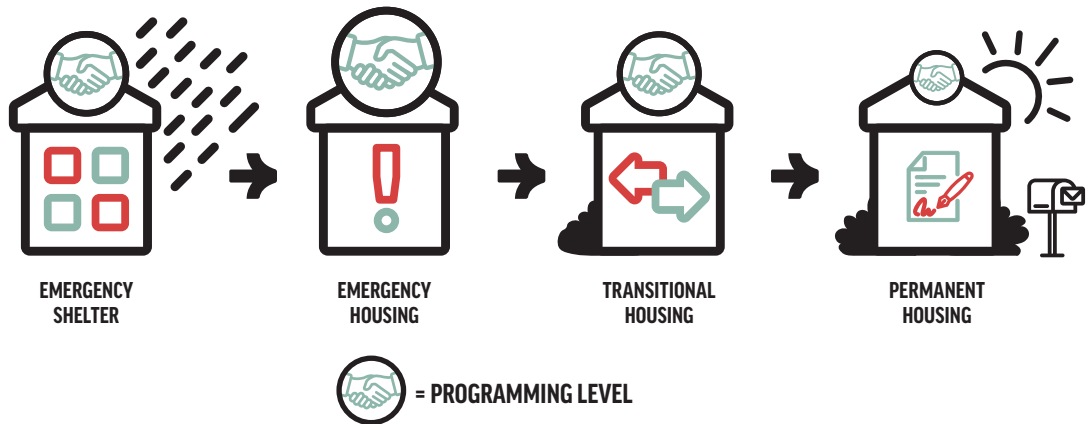
DIGITAL  
DETAILS

Today, Everett Gospel Mission (egm) is the **only organization in Snohomish County** to provide emergency shelter for single men, and the **largest organization** providing emergency shelter to single women and families. Regardless of what brings them to us, each is welcomed as Christ, without discrimination, and treated with dignity and respect.

- egm is a community resource with **ten locations** across Snohomish County
- egm protects up to 300 people nightly resulting in approximately 110,000 safe nights annually
- egm averages 690 meals daily, approximately 251,000 meals each year

### MORE THAN FOOD & SHELTER: EGM LISTENS AND INNOVATES

egm offers a full continuum of care for people desiring stable housing; shelters provide stability, so that we can do more.



### TOGETHER WITH OUR COMMUNITY PARTNERS EGM OFFERS:

- **Coaching, Life Skills, Addiction Recovery, and Relapse Prevention Support**
  - We support growth in the knowledge, skills and practical tools for healing spiritually, mentally, socially, and physically
  - Clients are transformed through self-discovery, understanding addictions, Biblical insights, and individual counseling
  - In our structured environments, clients secure employment, housing, and financial stability
- **Housing Essential Needs (HEN) Distribution Center**
  - Necessary products that cannot be purchased with SNAP (food stamps) e.g.: personal hygiene products and household cleaning supplies
  - Transportation support through gas cards and bus passes
  - egm welcomes nearly 600 HEN recipients each month
- **Basic Healthcare Access and Support**
  - egm welcomes healthcare professionals who provide on-site care
  - egm works with clients to help them access further healthcare
  - In partnership with Providence, egm provides respite care beds, so that men and women discharged from the hospital can be cared for at egm

**PATIENTS WITHOUT HOMES**



ARE **4 TIMES MORE LIKELY** TO BE HOSPITALIZED THAN OTHERS



ARE MORE LIKELY TO SUFFER FROM **DEBILITATING MEDICAL CONDITIONS**



ARE **3 TIMES MORE LIKELY** TO DIE PREMATURELY



STAY IN THE HOSPITAL ON AVERAGE **4 DAYS LONGER**

**MEDICAL RESPITE CARE CHANGES THE DYNAMIC**



PATIENTS WHO RECEIVE RESPITE CARE ARE **50% LESS LIKELY** TO BE READMITTED TO A HOSPITAL WITHIN 90 DAYS AFTER DISCHARGE



THE AVERAGE COSTS ASSOCIATED WITH HOSPITALIZATION FOR A HOMELESS PATIENT ARE **MORE THAN \$2,500 HIGHER** THAN FOR A HOUSED PATIENT



**EGM PILOTED ONE OF THE FIRST AND LARGEST PALLET COMMUNITIES**

In partnership with the city of Everett, [egm piloted](#) one of the first and the largest [Pallet shelter](#) communities in Snohomish County. [Palisades Village](#) includes 40 temporary, innovative and affordable shelters built by Everett-based company, [Pallet](#).

- Referrals via the city's [Community Support Teams](#) – as an entrée towards stable housing
- Accommodation for people whose needs require private units with locking doors
- Palisades includes: Community Room, 24-Hour Security, Private Bathrooms, Private Showers, Outdoor Cooking Area



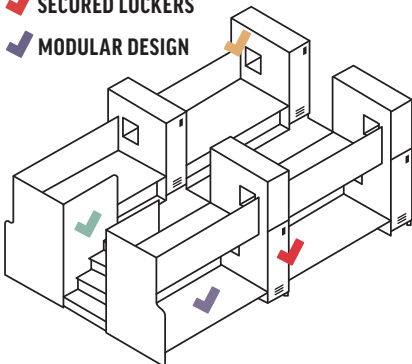
**EGM DEVELOPED THE INNOVATIVE [POVERTY 101 TRAINING](#)**

Created by egm to transform the community, [Poverty 101](#) is an insightful and interactive workshop equipping participants to better love and serve by experiencing mutual transformation.

- Sharing from their own transformation, individually and organizationally, presenters guide through challenging content, personal stories, and activities that take each participant along a similar journey of change
- egm partners with local churches, municipalities/government agencies, higher education and businesses to conduct this workshop
- Since 2014, egm has conducted over 100 workshops for over 3,600 people across Snohomish, King, and Pierce County

*“This is one of the best contributions to social change that egm does...provocative and meaningful. Led to soul-searching at a much deeper level.” – Poverty 101 Participant*

- ✓ ADA COMPLIANT
- ✓ POWER FOR A LIGHT & PHONE
- ✓ SECURED LOCKERS
- ✓ MODULAR DESIGN



**EGM DESIGNED & CREATED [STEP UP BEDS](#) (NOW IN USE ACROSS THE NATION)**



Bunks were insufficient, so with input from clients, we designed a comfortable, accessible bed system



Exemplifies egm values via a dignified, more secure, and private space for rest



Removes physical barriers to accommodate more guests (stairs vs. ladder)



Increases security with private storage, a charging station, and mitigation of movement/sound disturbances

Your support can help transform lives. Contact Nathan 'Chivo' Hawkins at 425.740.2504 or [CHawkins@egmission.org](mailto:CHawkins@egmission.org) for details.