

Engaging with the Community To Alleviate Poverty Since 1961.



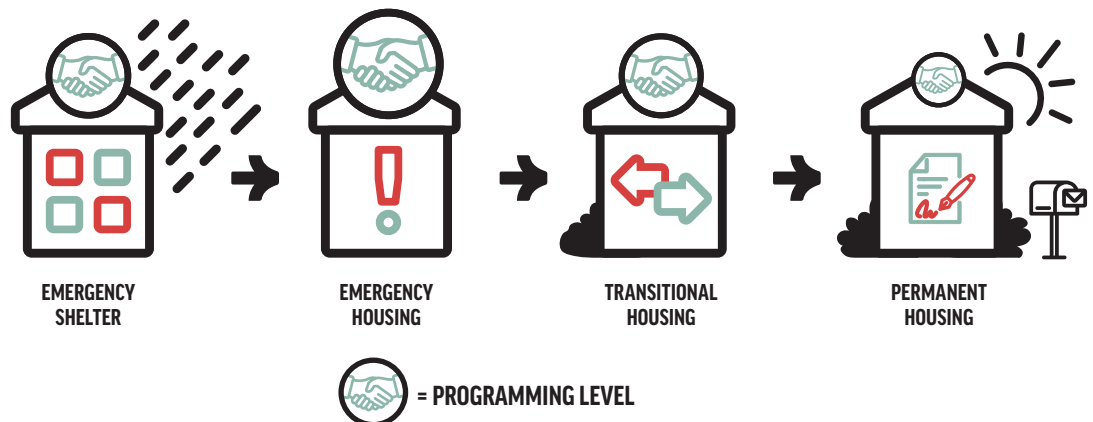
DIGITAL
DETAILS

Today, Everett Gospel Mission (egm) is the **only organization in Snohomish County** to provide emergency shelter for single men, and the **largest organization** providing emergency shelter to single women and families. Regardless of what brings them to us, each is welcomed as Christ, without discrimination, and treated with dignity and respect.

- egm is a community resource with **ten locations** across Snohomish County
- egm protects up to 300 people nightly resulting in approximately 110,000 safe nights annually
- egm averages 690 meals daily, approximately 251,000 meals each year

MORE THAN FOOD & SHELTER: EGM LISTENS AND INNOVATES

egm offers a full continuum of care for people desiring stable housing; shelters provide stability, so that we can do more.



TOGETHER WITH OUR COMMUNITY PARTNERS EGM OFFERS:

- **Coaching, Life Skills, Addiction Recovery, and Relapse Prevention Support**
 - We support growth in the knowledge, skills and practical tools for healing spiritually, mentally, socially, and physically
 - Clients are transformed through self-discovery, understanding addictions, Biblical insights, and individual counseling
 - In our structured environments, clients secure employment, housing, and financial stability
- **Housing Essential Needs (HEN) Distribution Center**
 - Necessary products that cannot be purchased with SNAP (food stamps) e.g.: personal hygiene products and household cleaning supplies
 - Transportation support through gas cards and bus passes
 - egm welcomes nearly 600 HEN recipients each month
- **Basic Healthcare Access and Support**
 - egm welcomes healthcare professionals who provide on-site care
 - egm works with clients to help them access further healthcare
 - In partnership with Providence, egm provides respite care beds, so that men and women discharged from the hospital can be cared for at egm

PATIENTS WITHOUT HOMES



ARE **4 TIMES MORE LIKELY** TO BE HOSPITALIZED THAN OTHERS



ARE MORE LIKELY TO SUFFER FROM **DEBILITATING MEDICAL CONDITIONS**



ARE **3 TIMES MORE LIKELY** TO DIE PREMATURELY



STAY IN THE HOSPITAL ON AVERAGE **4 DAYS LONGER**

MEDICAL RESPITE CARE CHANGES THE DYNAMIC



PATIENTS WHO RECEIVE RESPITE CARE ARE **50% LESS LIKELY** TO BE READMITTED TO A HOSPITAL WITHIN 90 DAYS AFTER DISCHARGE



THE AVERAGE COSTS ASSOCIATED WITH HOSPITALIZATION FOR A HOMELESS PATIENT ARE **MORE THAN \$2,500 HIGHER** THAN FOR A HOUSED PATIENT



EGM PILOTED ONE OF THE FIRST AND LARGEST PALLET COMMUNITIES

In partnership with the city of Everett, egm piloted one of the first and the largest Pallet shelter communities in Snohomish County. Palisades Village includes 40 temporary, innovative and affordable shelters built by Everett-based company, Pallet.

- Referrals via the city's Community Support Teams – as an entrée towards stable housing
- Accommodation for people whose needs require private units with locking doors
- Palisades includes: Community Room, 24-Hour Security, Private Bathrooms, Private Showers, Outdoor Cooking Area



EGM DEVELOPED THE INNOVATIVE **POVERTY 101** TRAINING

Created by egm to transform the community, Poverty 101 is an insightful and interactive workshop equipping participants to better love and serve by experiencing mutual transformation.

- Sharing from their own transformation, individually and organizationally, presenters guide through challenging content, personal stories, and activities that take each participant along a similar journey of change
- egm partners with local churches, municipalities/government agencies, higher education and businesses to conduct this workshop
- Since 2014, egm has conducted over 100 workshops for over 3,600 people across Snohomish, King, and Pierce County

"This is one of the best contributions to social change that egm does...provocative and meaningful. Led to soul-searching at a much deeper level." – Poverty 101 Participant

EGM DESIGNED & CREATED **STEP UP BEDS** (NOW IN USE ACROSS THE NATION)



Bunks were insufficient, so with input from clients, we designed a comfortable, accessible bed system



Exemplifies egm values via a dignified, more secure, and private space for rest

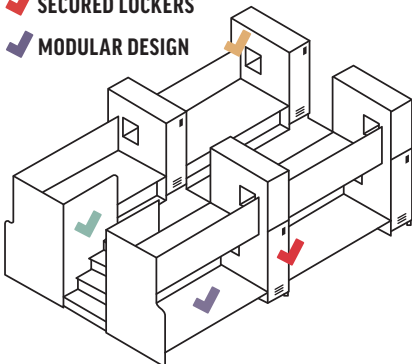


Removes physical barriers to accommodate more guests (stairs vs. ladder)



Increases security with private storage, a charging station, and mitigation of movement/sound disturbances

- ✓ ADA COMPLIANT
- ✓ POWER FOR A LIGHT & PHONE
- ✓ SECURED LOCKERS
- ✓ MODULAR DESIGN



Your support can help transform lives. Contact Nathan 'Chivo' Hawkins at 425.740.2504 or CHawkins@egmission.org for details.